



# Overview of SafeLives current work With Leicestershire County Council (LCC):

1. Safe Accommodation Needs Assessment
2. Project Echo

DALPB 28.06.24

Chloe Bird and Nik Noone

# About SafeLives



We are SafeLives, the UK-wide charity dedicated to ending domestic abuse, for everyone and for good.



We are independent, practical and evidence-led, with survivor voice at the heart of our thinking.



We work with organisations across the UK to transform the response to domestic abuse.

## **We want what you want for your best friend:**



Action before someone is harmed or harms others



Harmful behaviour identified and stopped

Increased safety for everyone at risk



The ability for people to live the life they want after harm has happened

## Whole person



Seeing and responding to the whole person, not addressing a series of issues



## Whole family



Considering the physical, mental, and emotional safety and wellbeing of all family members.



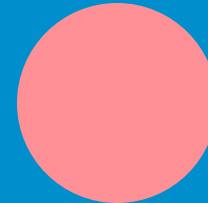
## Whole community



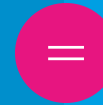
Equipping communities of geography, identity, workspace and to identify, understand and act on domestic abuse



## Whole society



Challenging and deconstructing gender stereotypes – particularly those of masculinity – supporting boys and men to break these norms.



## Whole Picture

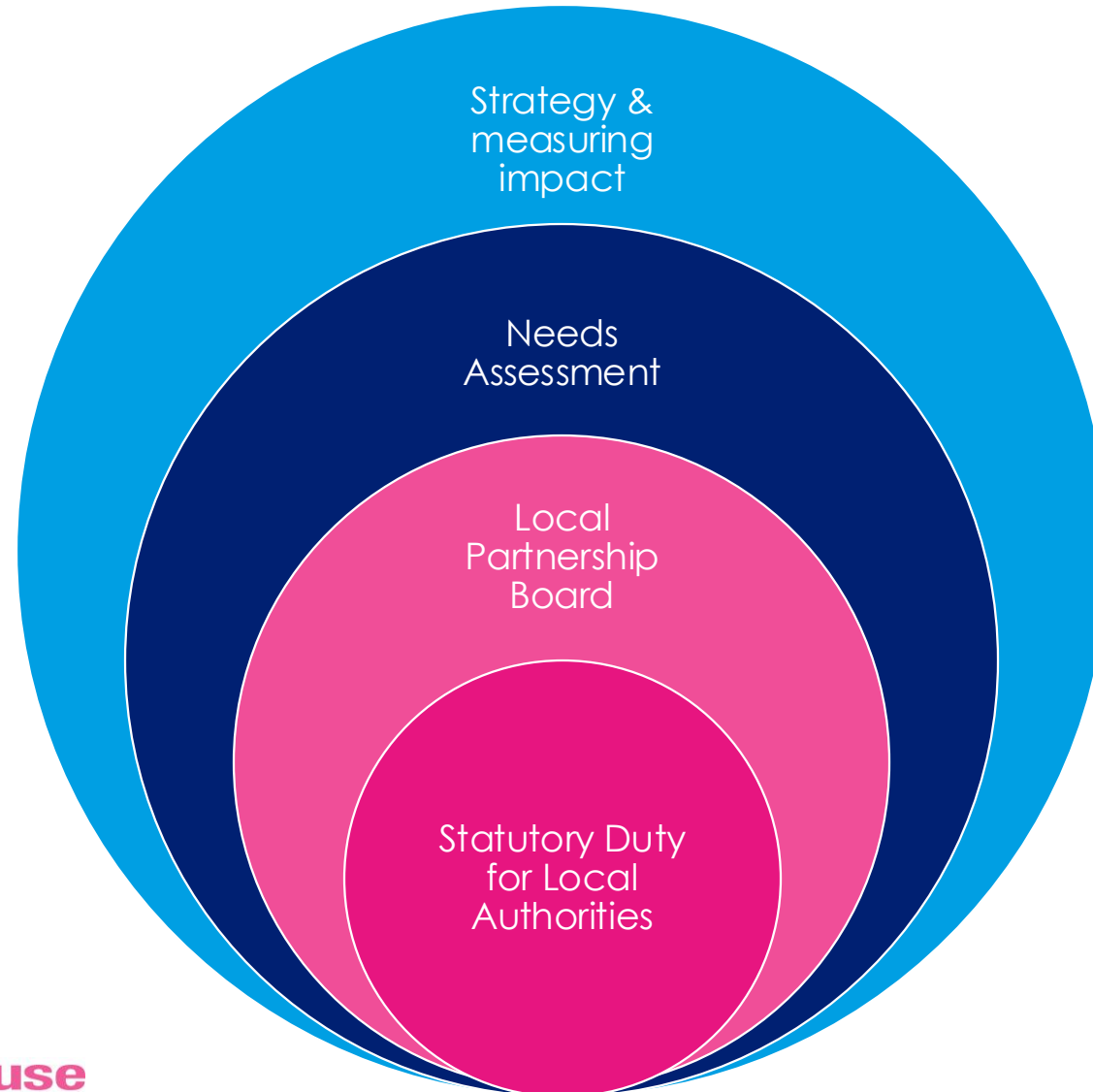


**A whole picture approach can transform the local response to domestic abuse, keeping families safe sooner**



# Safe Accommodation Needs Assessment (SANA)

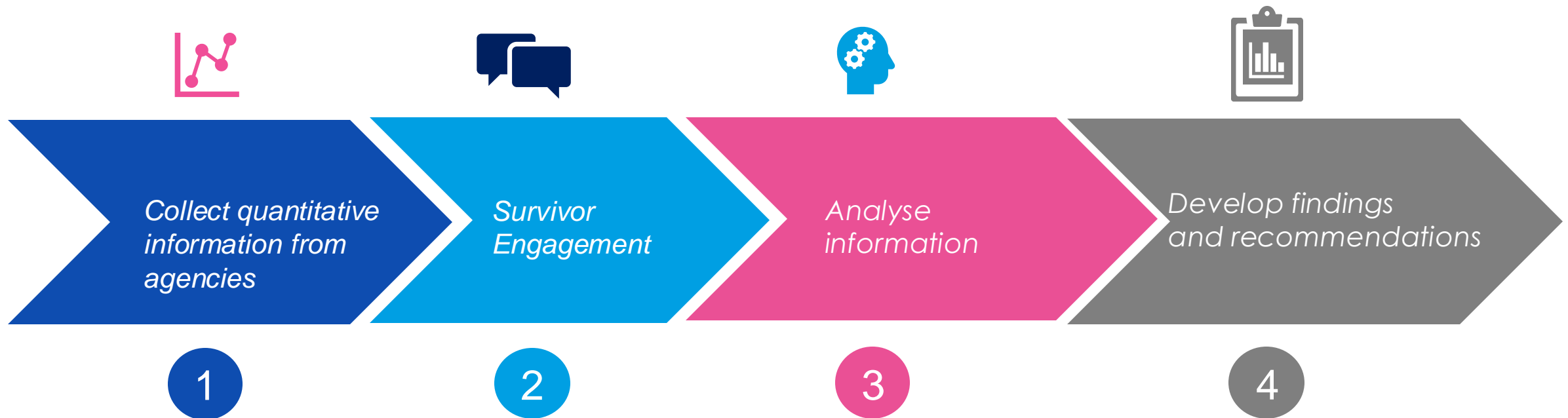
# A Strategic Framework for responding to The Domestic Abuse Act 2021



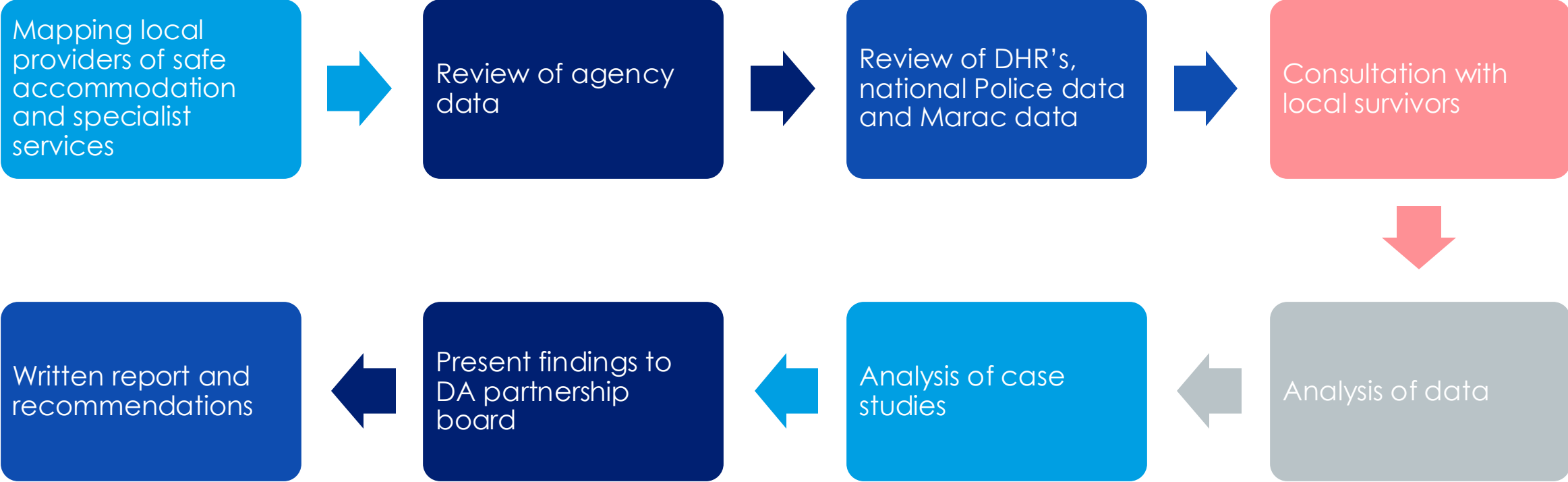
**Ending domestic abuse**

# The Process

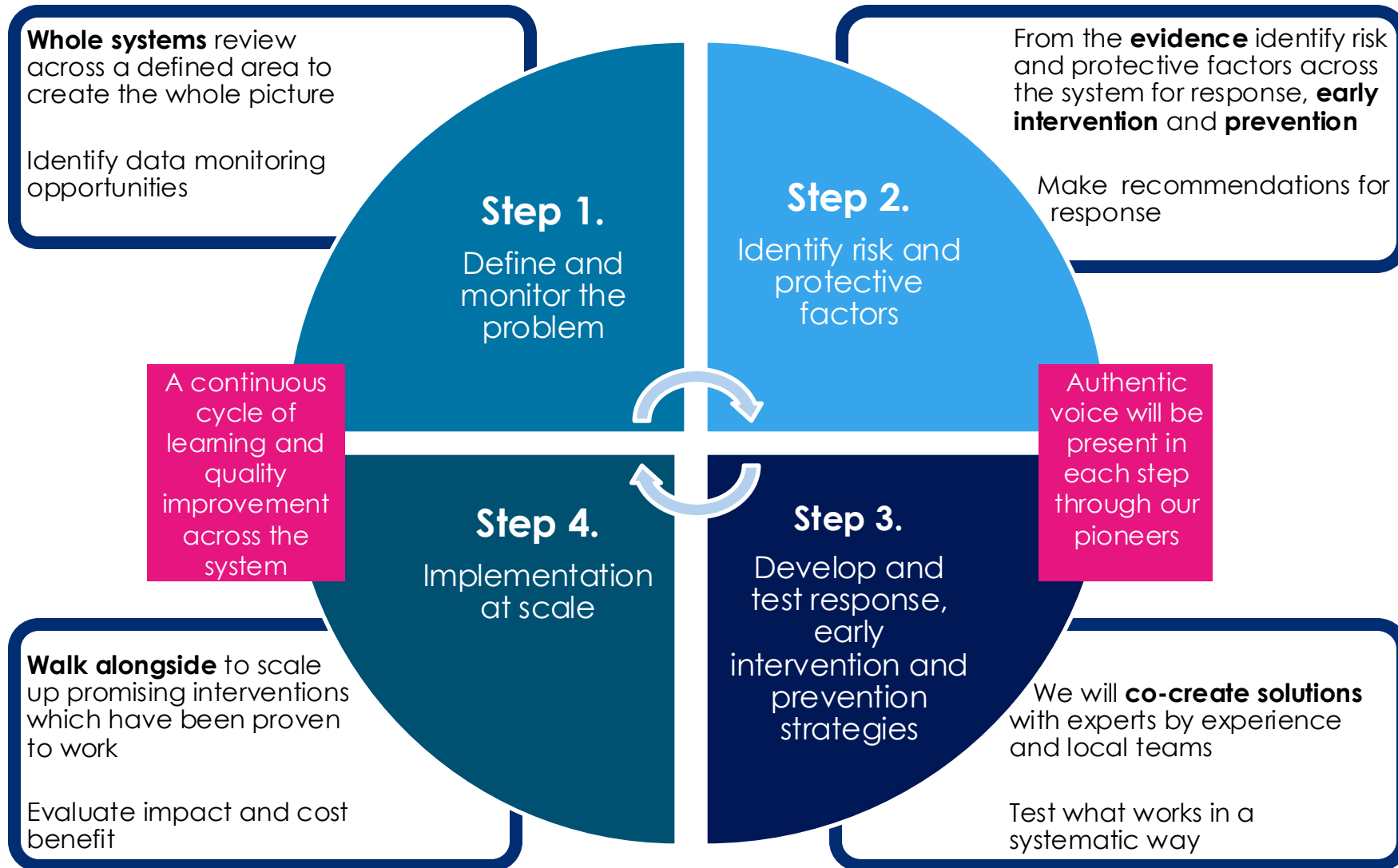
The needs assessment will contain a number of elements that will enable us to understand how Leicestershire Council is carrying out their statutory duty under the Domestic Abuse Act.



# Summary of SafeLives Main Activities:



# Practice Team Framework for Delivery 'Whole Picture'



∞



# Echo Project

The name Echo was designed and chosen by SafeLives Pioneers and Changemakers.

“ we want adult and young people's voices to be heard and shared, and "echoed" throughout the research and design of services. Similarly, it links to having it in different locations as we want the approach to be "echoed" in Bolton, Leicestershire and Sheffield. ”

The project aims to;

- Implement steps 3 and 4 of the PHA approach; to deliver a sustainable model for embedding child and adult survivors' voices in the design and delivery of policies and services intended to meet their needs
- Engage with survivors to co-create and test solutions to getting the right support at the right time, for children and adults
- Support practitioners to engage with a diverse range of survivors by creating an environment that enables survivor voice to thrive in order to inform services
- Take step 4, which evaluates impact and social value, making recommendations for sustainability in these three areas, as well as guiding nationwide scalability.
- Embed authentic voice in systems, helping to inform future commissioning practice through a risk led response

# How do we achieve this?

## This is a pilot

- Authentic voice on this scale is new so we are learning as we go and able to try new things. Be creative!

## Accessibility

- We want to hear from as many voices as possible and in a variety of formats. We need to reach out and make ourselves accessible and available to those who want to be heard and haven't been

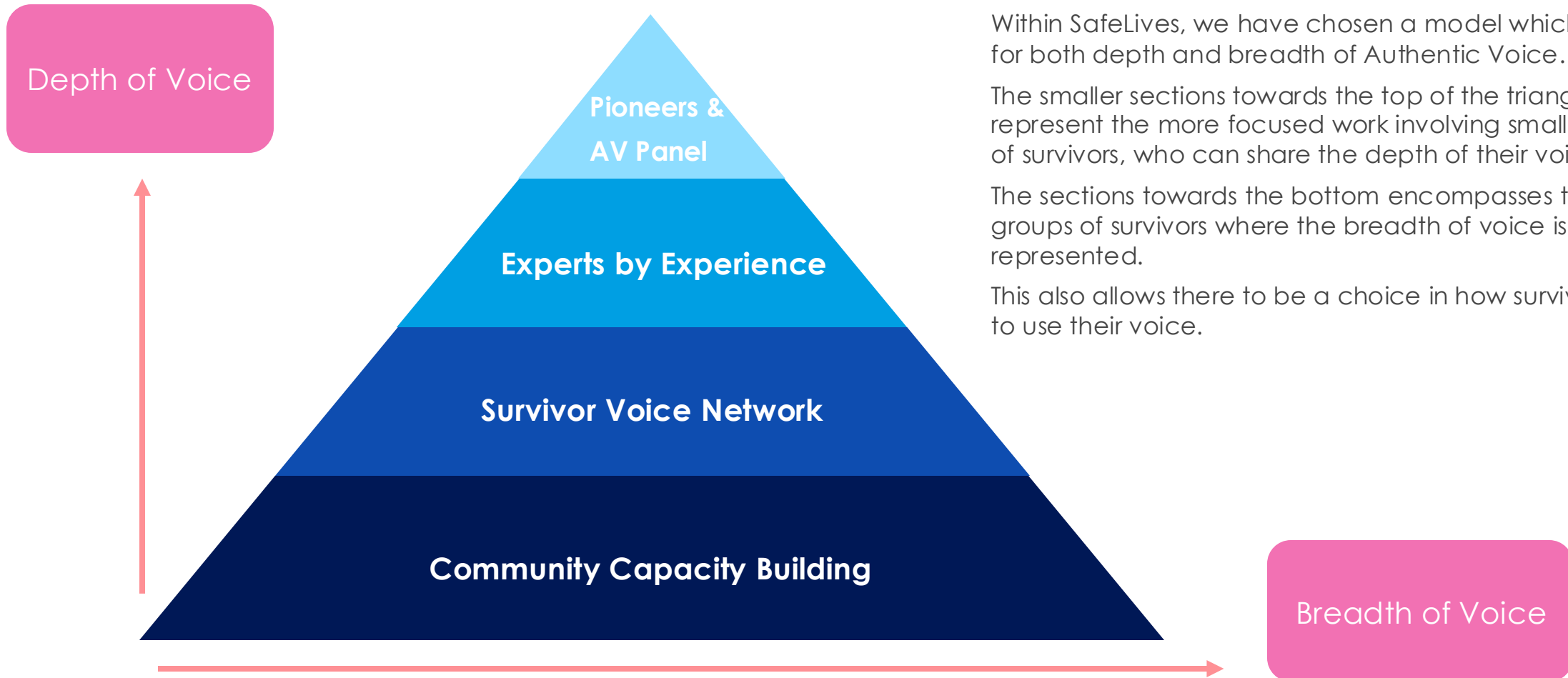
## Training

- Throughout the project, there will be training for the local AVCs, professionals and agencies in each site

## Systems Mapping

- Practice Consultants will be mapping agencies and systems in each site, working with local agencies to create connections and opportunities for survivors to be heard

# Model of Authentic Voice within SafeLives



Within SafeLives, we have chosen a model which allows for both depth and breadth of Authentic Voice.

The smaller sections towards the top of the triangle represent the more focused work involving smaller groups of survivors, who can share the depth of their voice.

The sections towards the bottom encompasses the larger groups of survivors where the breadth of voice is represented.

This also allows there to be a choice in how survivors want to use their voice.

# Principles of Authentic Voice

In a nutshell!



Do No Harm

Harm can occur as a result of what we do, or don't do

Risk is recognised and addressed with the survivor

Authentic voice work is trauma-informed

Expert by experience

Survivors and professionals bring knowledge which is vital in responding well to domestic abuse

No 'them and us'

Survivors are valued and compensated for their expertise

Speak your truth

Survivors are not spokespeople for organisations they work with

Survivors can choose what and when they share, and who they share with

Survivors recognise the impact their voices may have on others

Heart and Start

Survivors' voices are included at the very beginning and involved through to the end of all work

Create not rate

Survivors are informed of the impact of their work, and are safely acknowledged

Equality and Diversity

Anyone can experience domestic abuse, and our experience is affected by our different identities

Services find ways to access the voices they are not hearing

Caring

Services and survivors work together

Services give choices in the support they offer survivors; survivors share responsibility in taking care of themselves

Survivors and services learn and develop together – nobody knows everything

## Next 3 months

Recruitment	We hope to have all AVCs in post by the end of August
Training package	Once all in post, commence training package for AVCs & host agencies on Authentic Voice principles and ways of working All partner agencies in sites to attend cultural competency training
Service mapping	Linking in with Practice Consultants re mapping and current links in area
Area Visits	Practice Consultants to visit areas and meet host agencies – potentially observe sessions
Meetings	Attend steering group and project group meetings
Charter	We aim for each site to have a Charter or Memorandum of Understanding. This will include the local DA Partnership board

